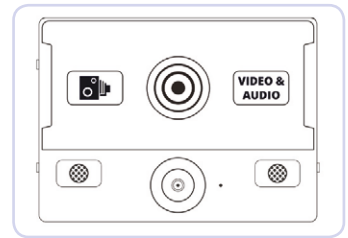


# Body Worn Camera Operator Instructions

## About Camera

- You have full control over when the camera is recording.
- Fully charged, it can record up to eight hours of video and audio.



## Start Of Shift: [SWIPE and LIFT]

### 1. Check out a camera using RFID tag

- Locate camera dock area,
- Swipe your RFID tag over RFID Reader until it beeps,
- Your allocated camera will beep for 15 seconds and its top light will glow red,
- Take your camera from the dock - you will hear a beep as you lift it,
- Mount the camera on your uniform and rotate until level,
- The camera is now ready to record in your name.



## During Shift

### 1. To start recording video and audio

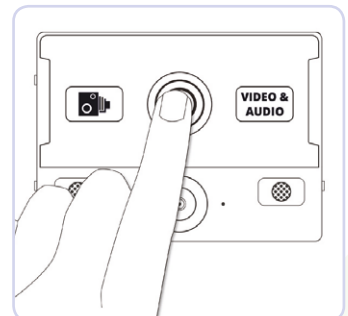
- Press the front logo,
- Camera will beep and front red lights will glow to show recording in progress.

### 2. Bookmarking

- This is configurable.

### 3. To stop recording [PRESS and HOLD]

- Press and hold front logo for 3 seconds,
- You will hear a long beep and the front red lights will go out.



## End Of Shift: [DOCK and GO]

### 1. Return camera [NO RFID CARD NEEDED!]

- Remove camera from your uniform,
- Rotate croc clip (if required),
- Park camera in any free dock slot (will beep when docked).

**NOTE: When docked, camera will recharge and automatically push videos to server.**

